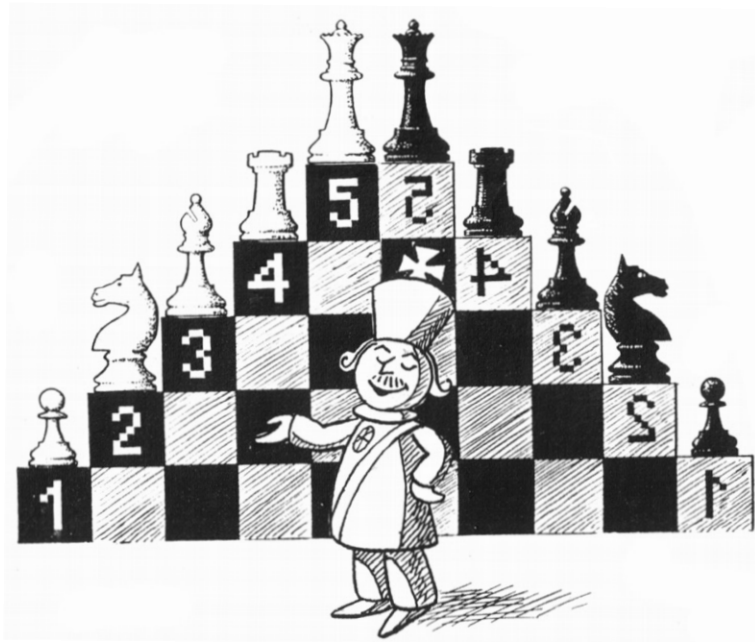


Étape 1 mix



FR Un livre de travail rempli d'exercices. La question est toujours 'simple': trouvez le meilleur coup. Comme pour une vraie partie, personne ne vous dit si la position est gagnante ou s'il faut surtout défendre. Regardez donc bien.

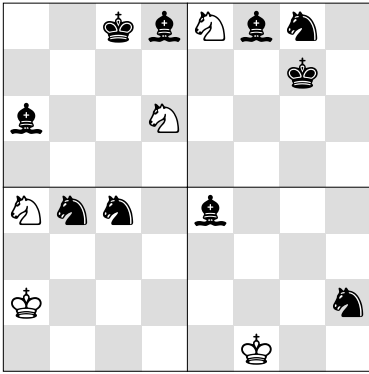
Le roi ennemi est-il en insécurité ? Faites mat. Pouvez-vous prendre une pièce ? Cherchez les pièces non ou insuffisamment protégées. Une de vos pièces est en danger ? Défendez-la ! Votre roi est en échec ou menacé de mat ? Aidez-le.

Dans les itinéraires, seuls les Blancs jouent.

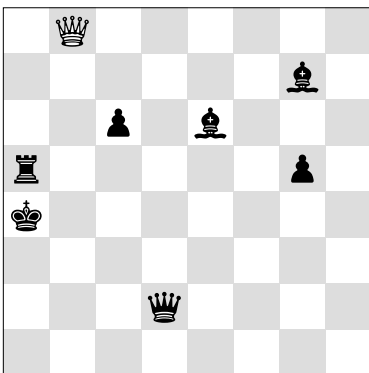
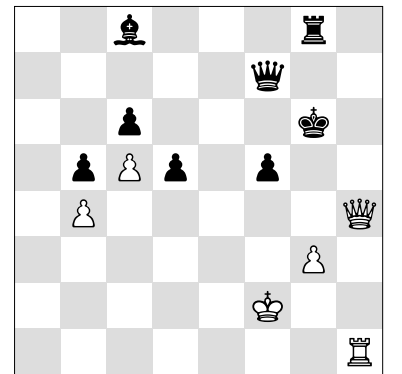
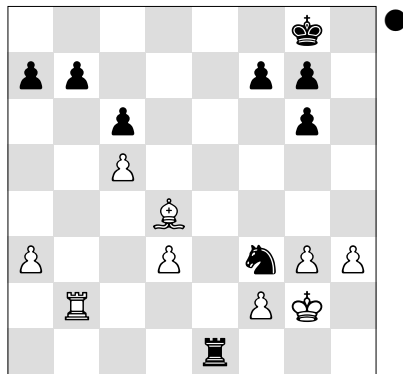
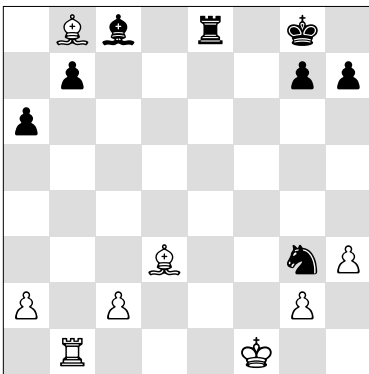
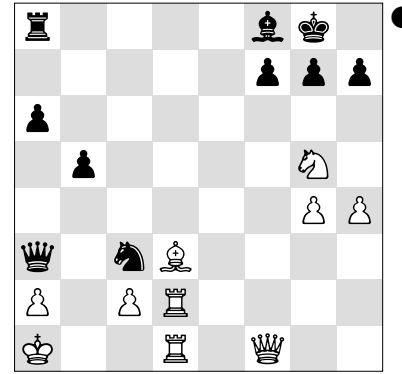
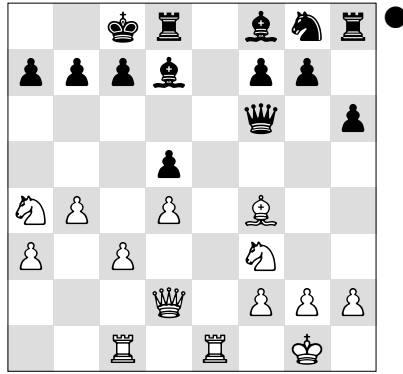
Les exercices à partir de la page 61 sont un peu plus difficiles et c'est pourquoi le thème est indiqué.

Pour en savoir plus sur le Étape 1 mix: <http://www.stappenmethode.nl/fr/etape1.php>

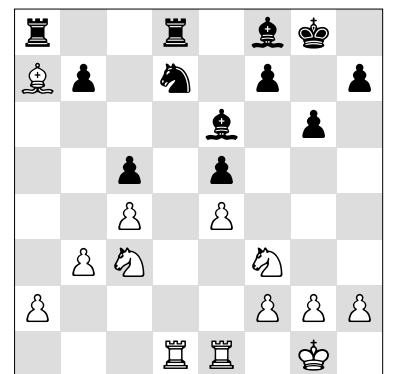
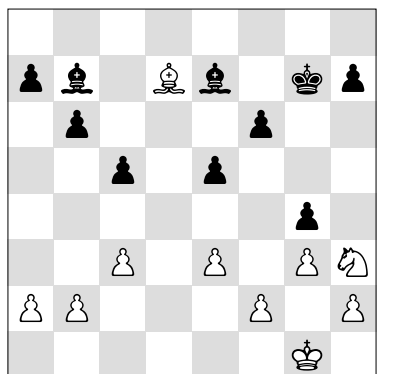
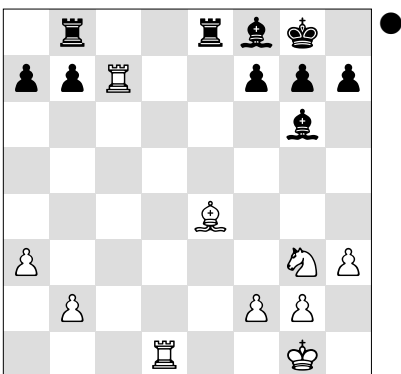
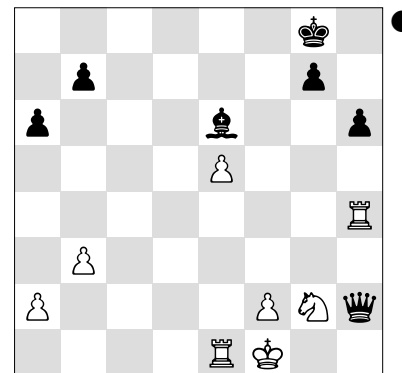
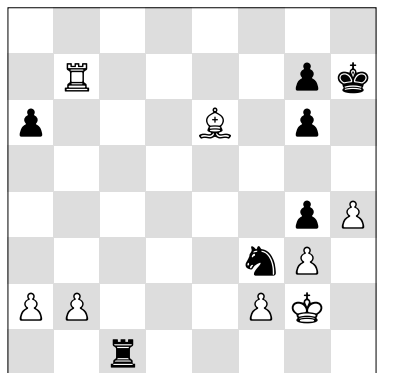
Pour plus d'informations et pour commander, nous vous invitons à consulter le site Internet :
<http://www.stappenmethode.nl/fr>

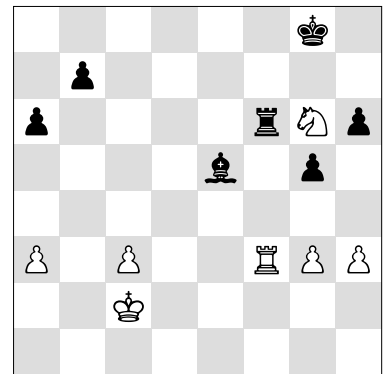
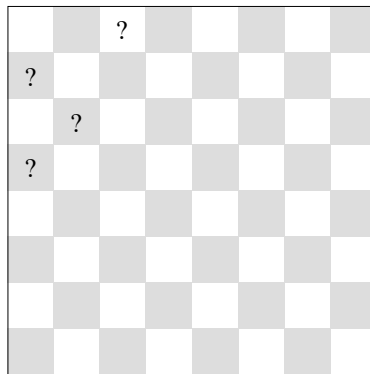
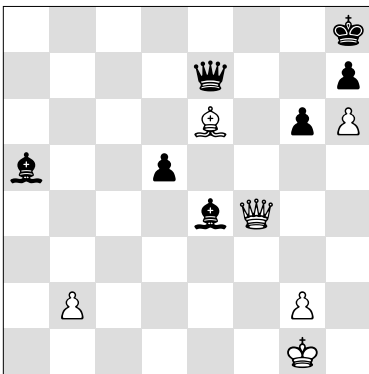
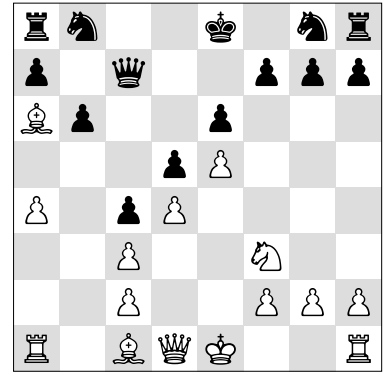
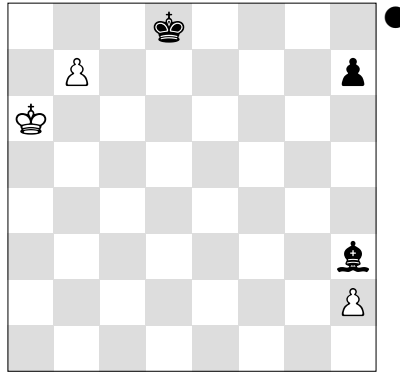
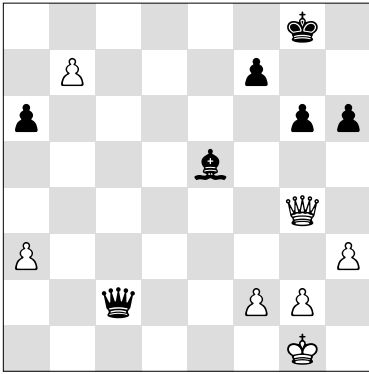


♔ = _____ ♔ = _____
 ♚ = _____ ♚ = _____

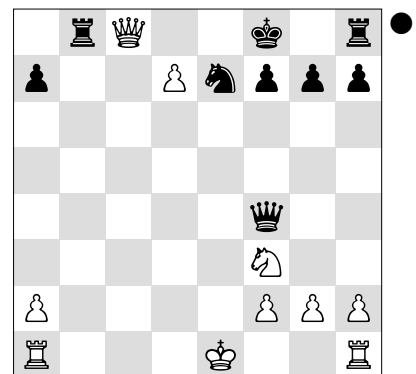
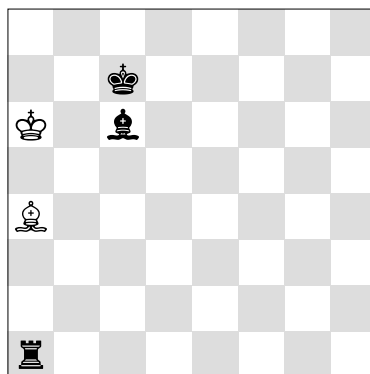
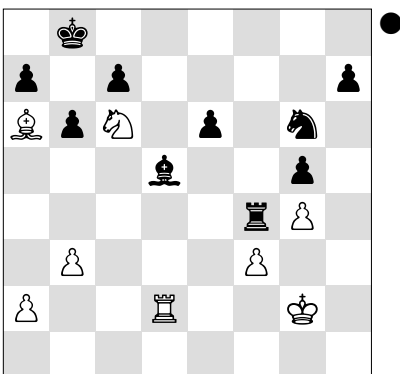
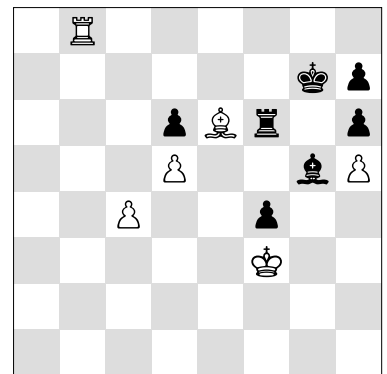
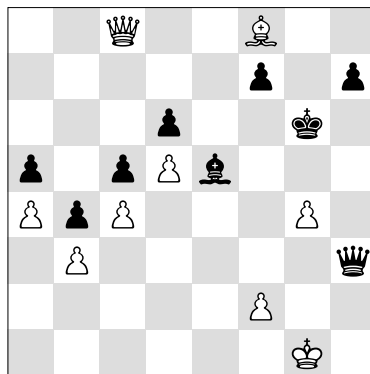
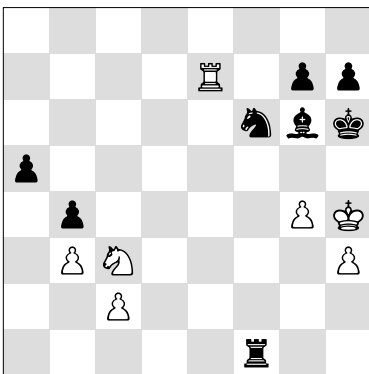


♚b8 - _____ - _____ +

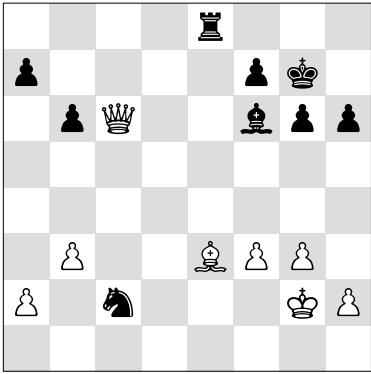




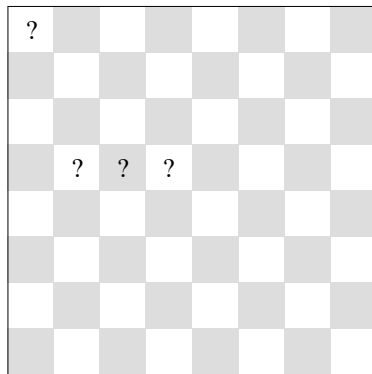
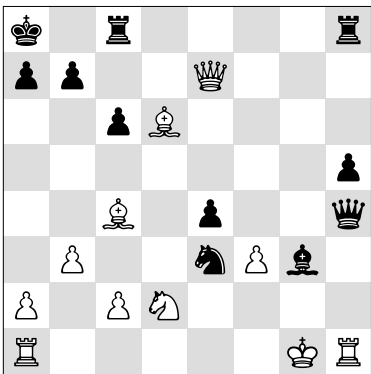
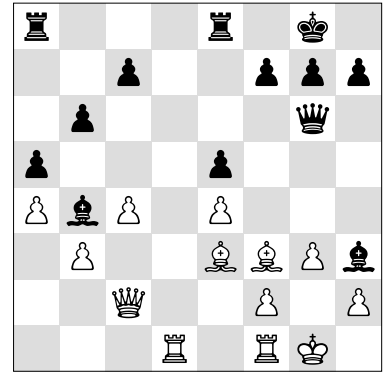
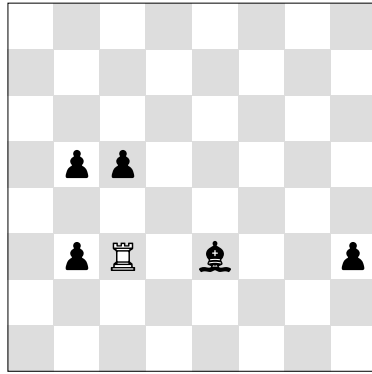
♔ = ___ ♕ = ___ ♖ = ___
♚ = ___



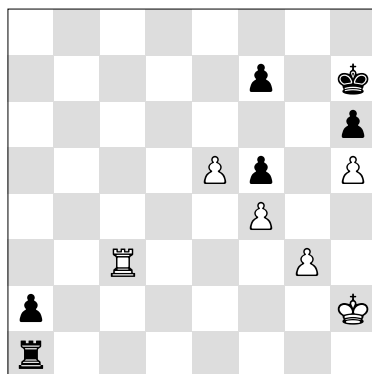
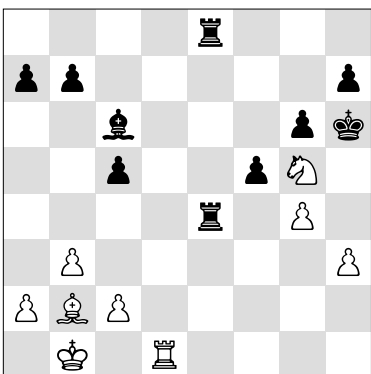
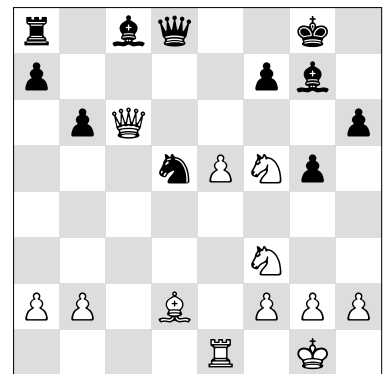
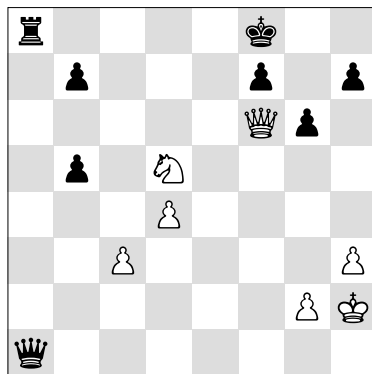
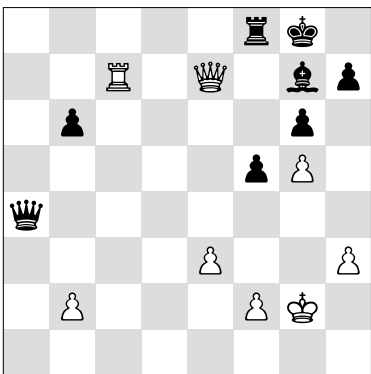
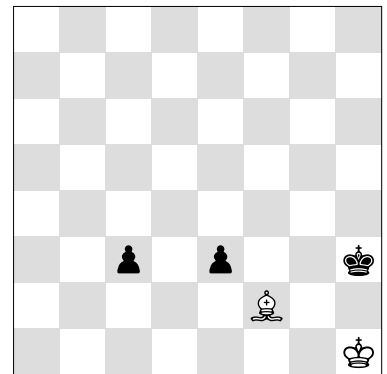
1. ♔a7 ___ # 1. ♔a5 ___ #



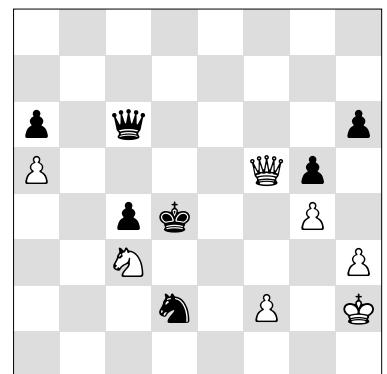
♖c3x x x x x

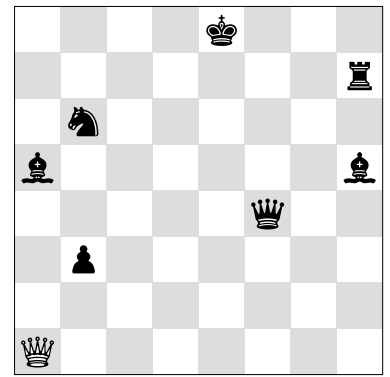
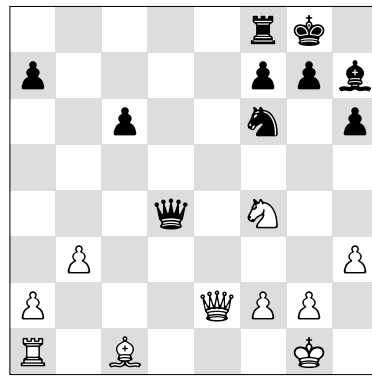
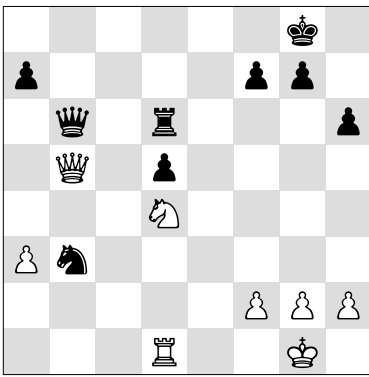
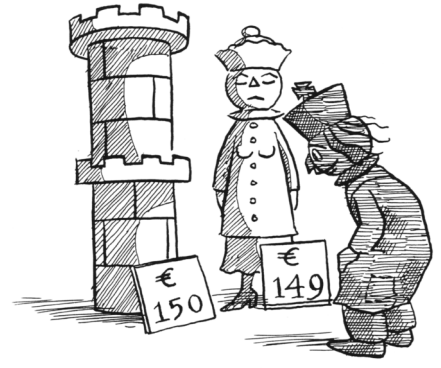
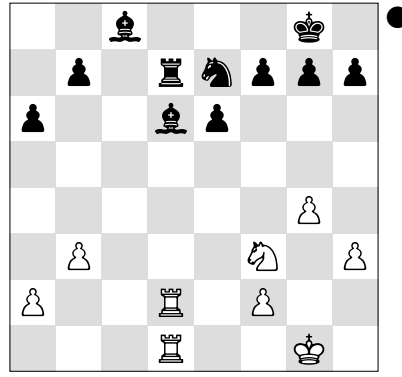
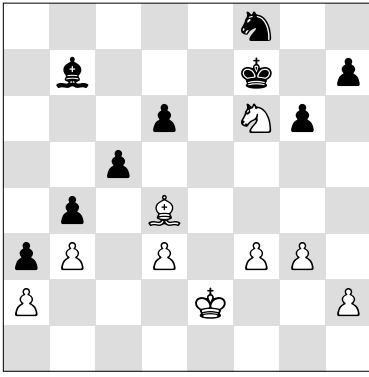


♖ = _ ♘ = _ ♙ = _
♚ = _

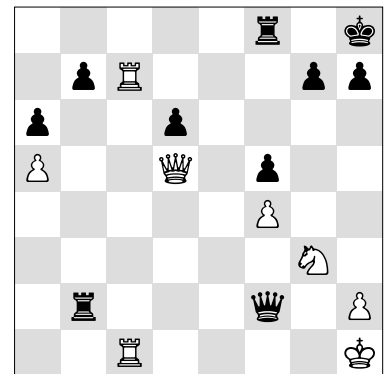
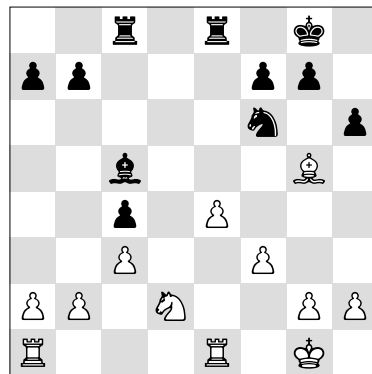
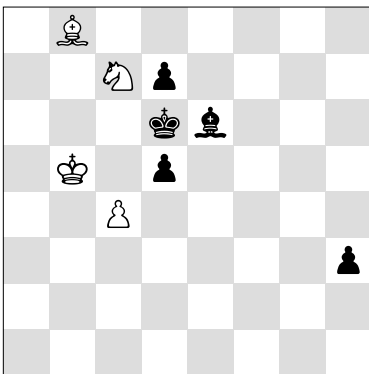
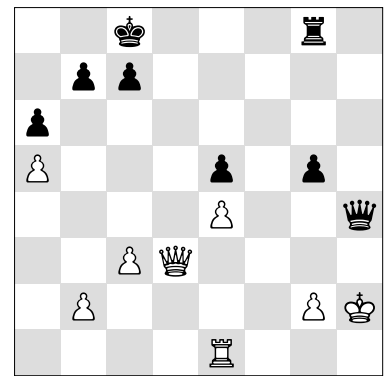
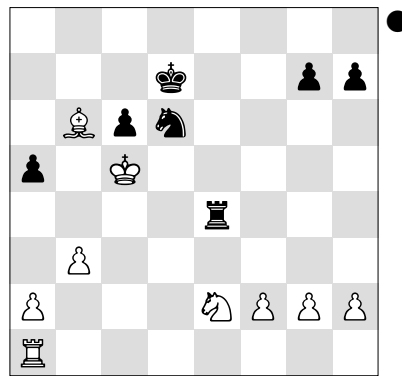
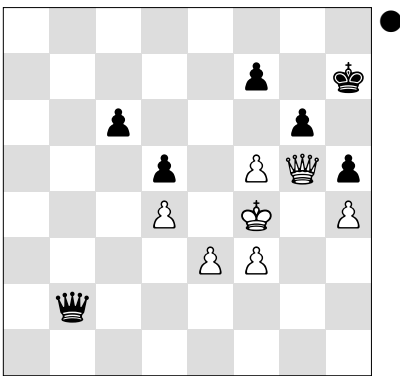


○ ♖c2 ○ ♖a3





♔a1 - - - +



○ ♔h1 ○ ♔f1 ○ ♕e3