

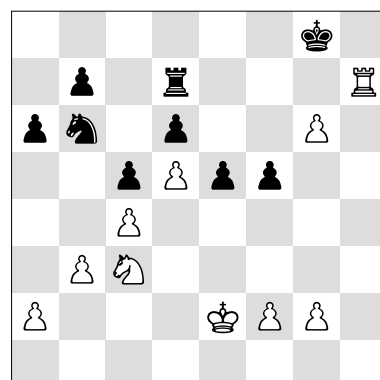
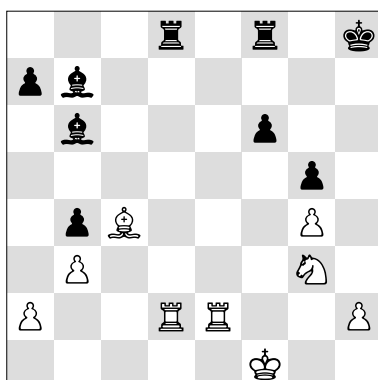
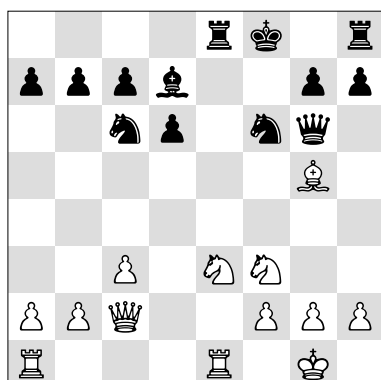
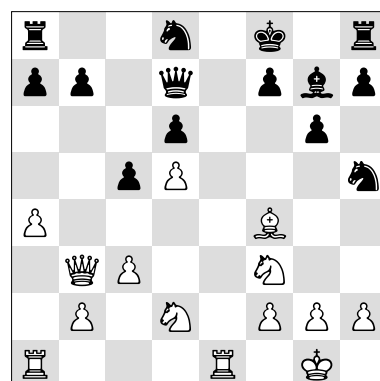
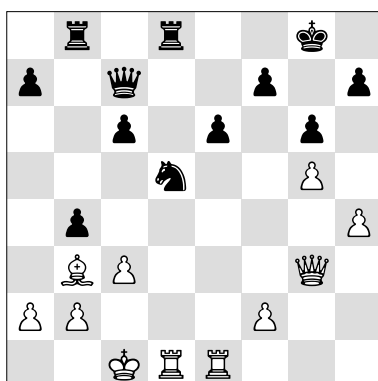
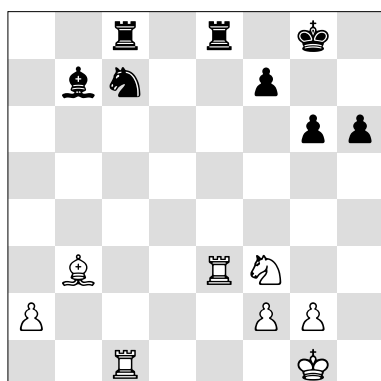
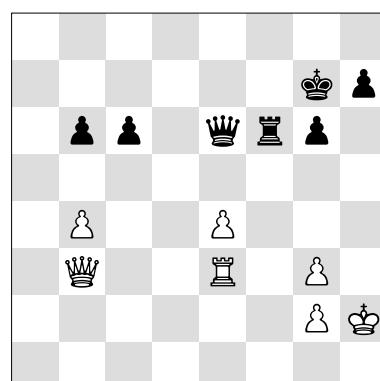
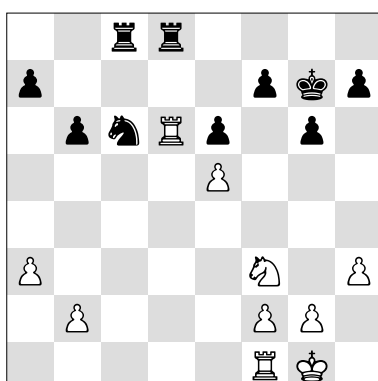
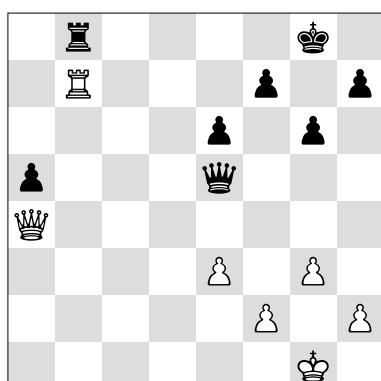
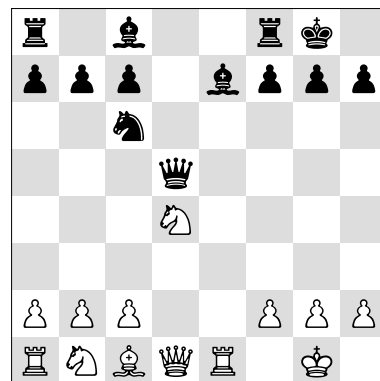
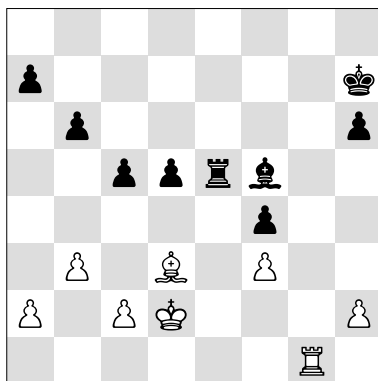
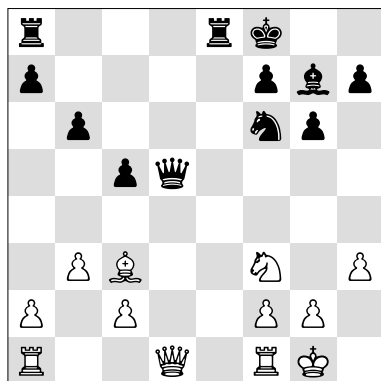
# Step 3 plus



<b>Name:</b>	<b>Date of birth:</b>
<b>Street:</b>	<b>Place:</b>
<b>Club:</b>	<b>Trainer:</b>
<b>Step 3 completed:</b>	<b>Step 3 extra completed:</b>

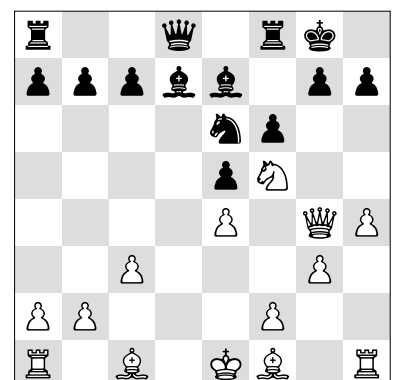
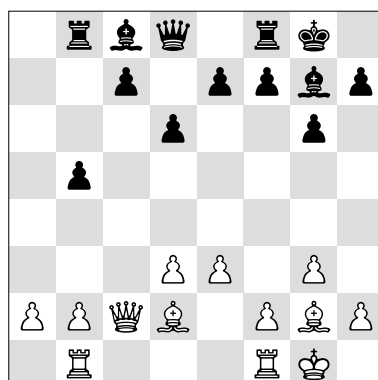
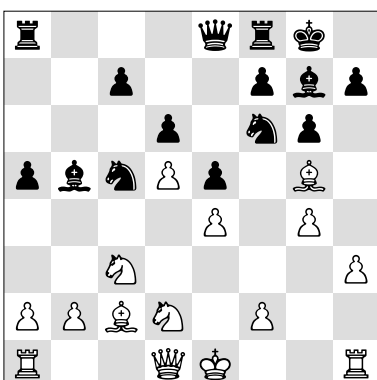
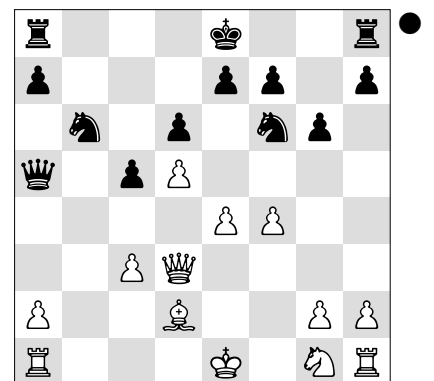
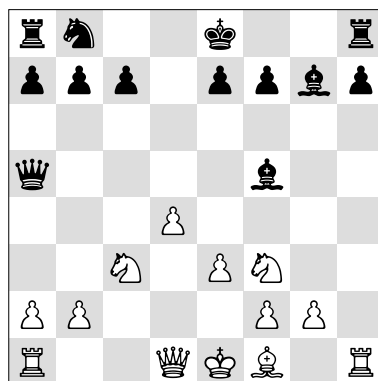
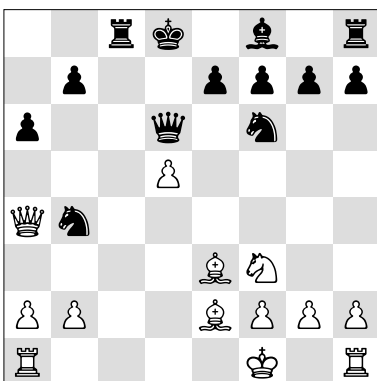
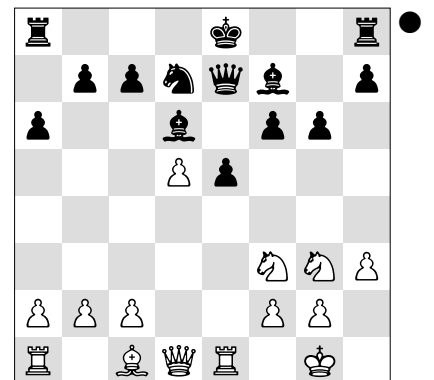
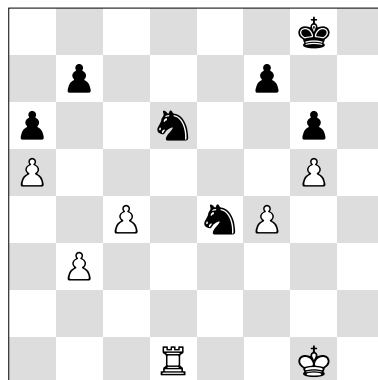
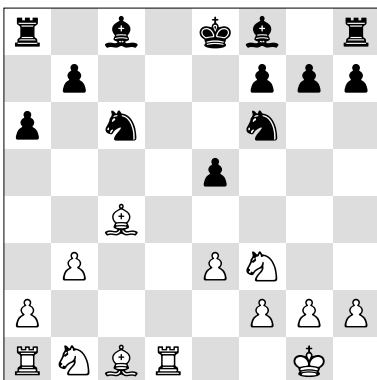
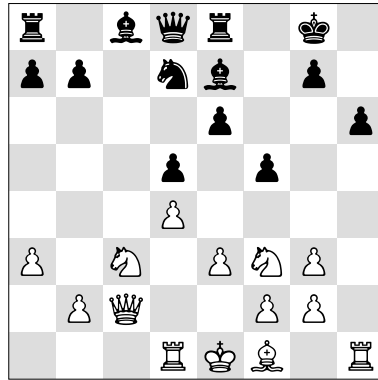
## Elimination of the defence

Intermediate move: **A**



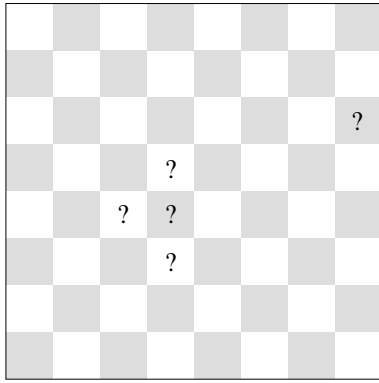
## Mini-plans

## Exploiting vulnerability: A

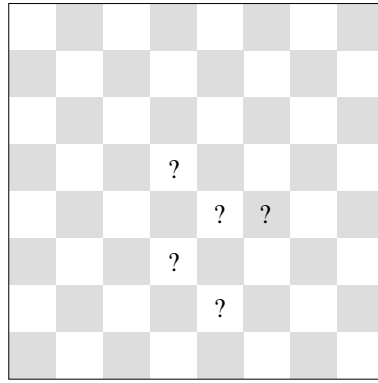


# Mate

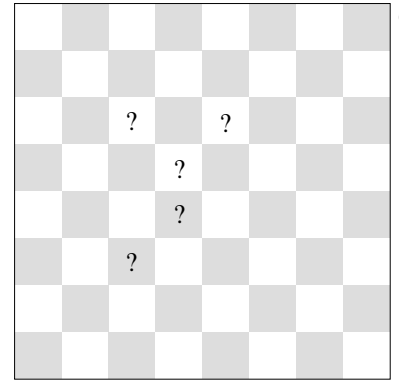
# Where is each piece?: A



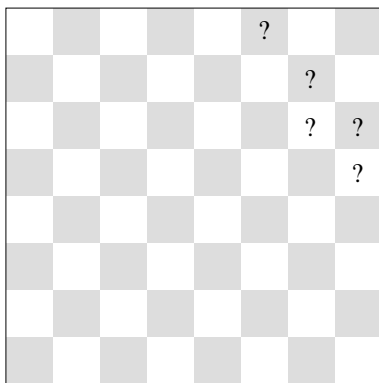
♔=      ♖=      ♕=  
♙=      ♜=



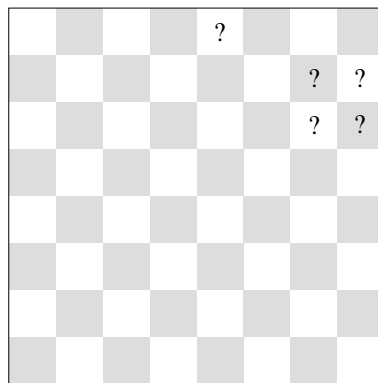
♔=      ♖=      ♘=  
♙=      ♜=



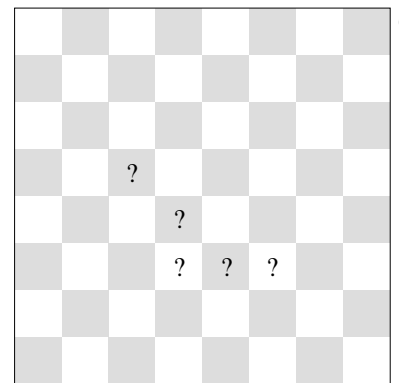
♔=      ♔=      ♚=  
♙=      ♙=      ♙=



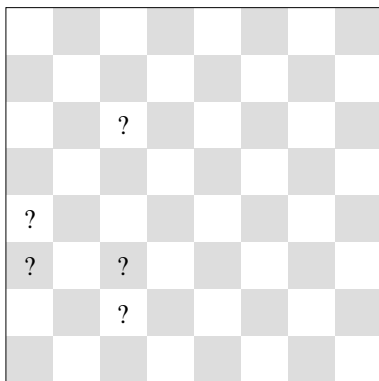
♖=      ♘=      ♚=  
♙=      ♙=



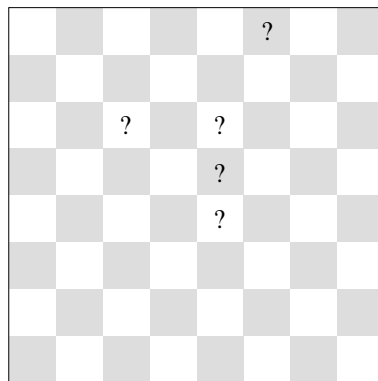
♔=      ♙=      ♚=  
♙=      ♙=



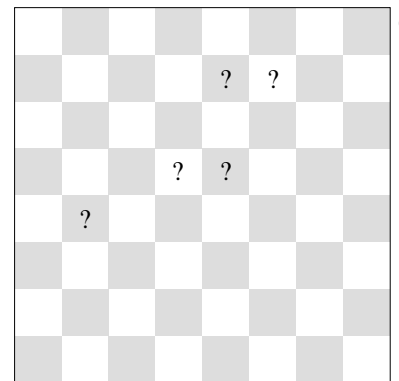
♔=      ♖=      ♙=  
♙=      ♙=



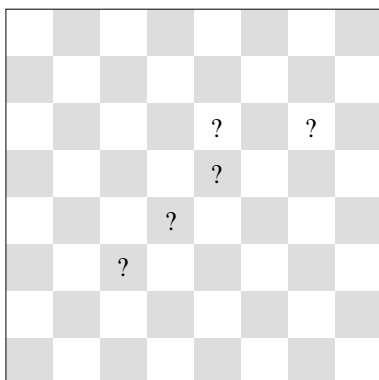
♔=      ♙=      ♙=  
♙=      ♖=



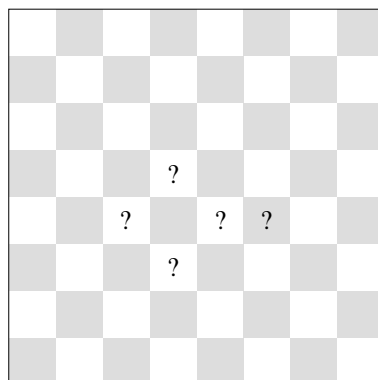
♔=      ♔=      ♙=  
♙=      ♙=



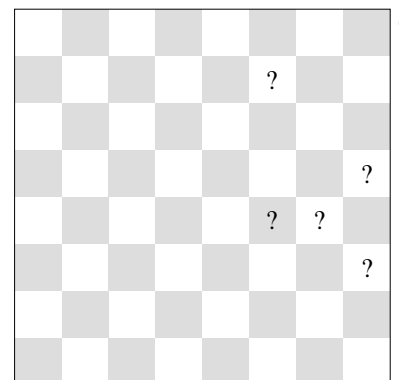
♔=      ♔=      ♘=  
♙=      ♙=



♔=      ♔=      ♕=  
♙=      ♙=



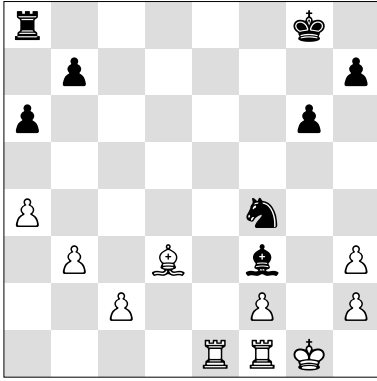
♔=      ♖=      ♚=  
♙=      ♙=



♔=      ♔=      ♕=  
♙=      ♙=

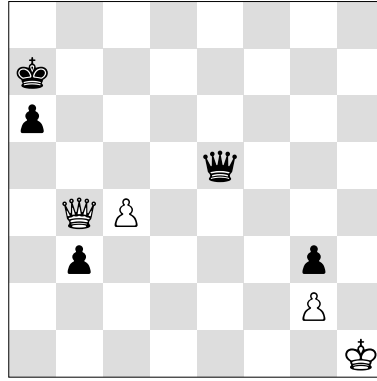
## Defending

## Defend against mate: **B**



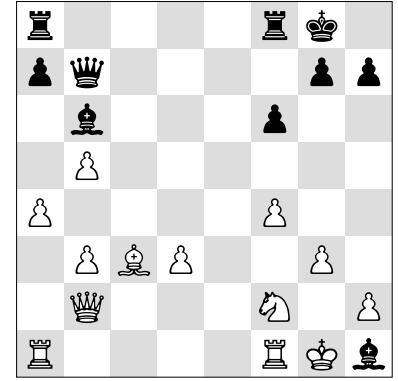
Can White prevent mate?

☐ yes, by ☐ no



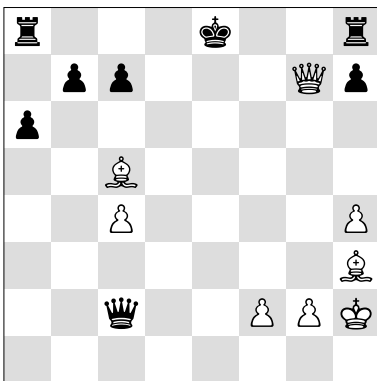
Can White prevent mate?

☐ yes, by ☐ no



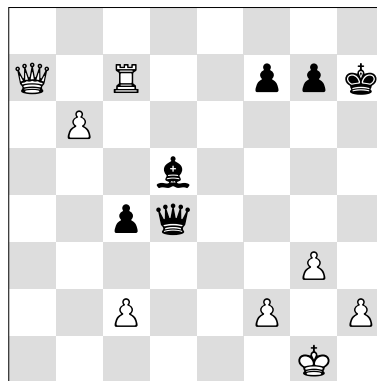
Can White prevent mate?

☐ yes, by ☐ no



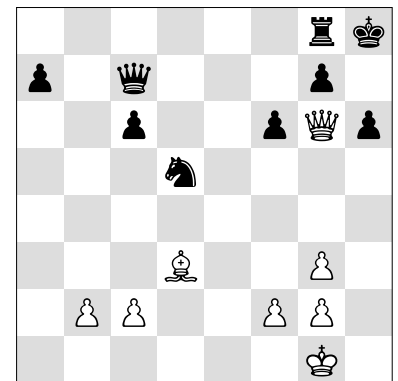
Can Black prevent mate?

☐ yes, by ☐ no



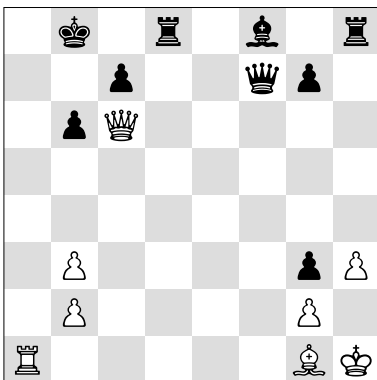
Can White prevent mate?

☐ yes, by ☐ no



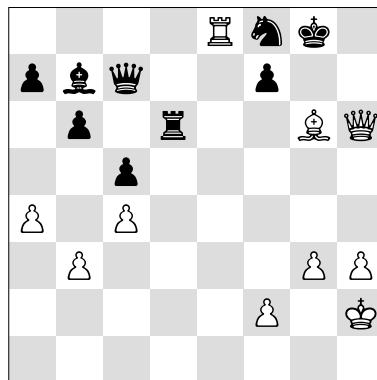
Can Black prevent mate?

☐ yes, by ☐ no



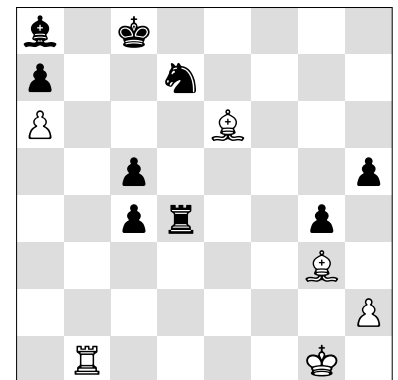
Can Black prevent mate?

☐ yes, by ☐ no



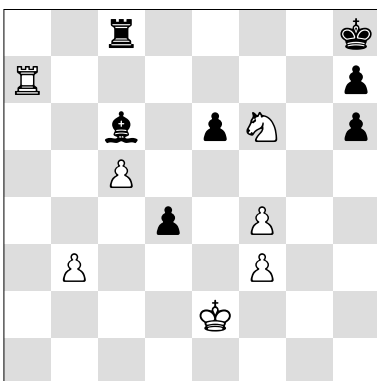
Can Black prevent mate?

☐ yes, by ☐ no



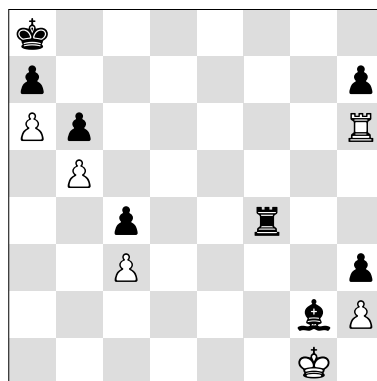
Can Black prevent mate?

☐ yes, by ☐ no



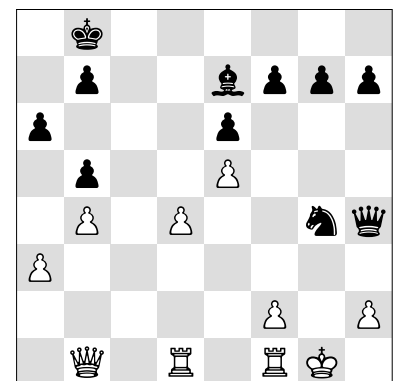
Can Black prevent mate?

☐ yes, by ☐ no



Can White prevent mate?

☐ yes, by ☐ no



Can White prevent mate?

☐ yes, by ☐ no