

# Step 1 mix



**EN** This workbook contains exercises with one 'simple' assignment: play the best move. Just like in a real game, you do not know whether you can win or whether you have to defend.

First, look at what's going on?

Is the enemy king in danger? Deliver mate. Can you capture a piece? Search for unprotected or insufficiently protected pieces. Is a friendly piece in danger? Defend!

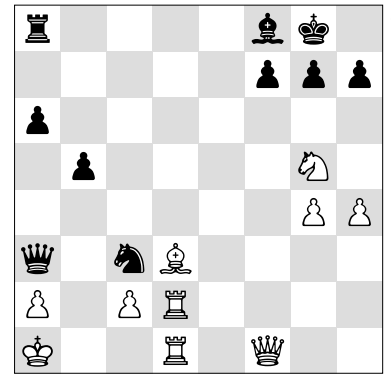
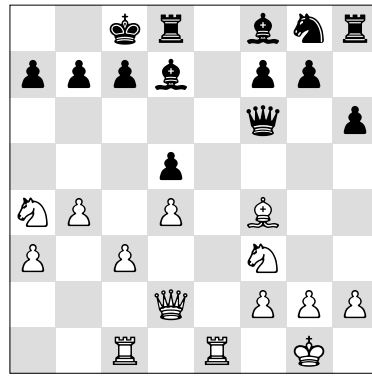
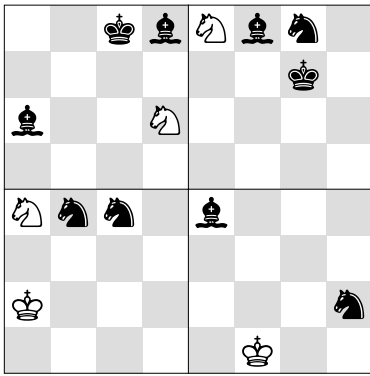
Is your king in check or is there a mating threat? Find the best solution.

In the route planners only White moves.

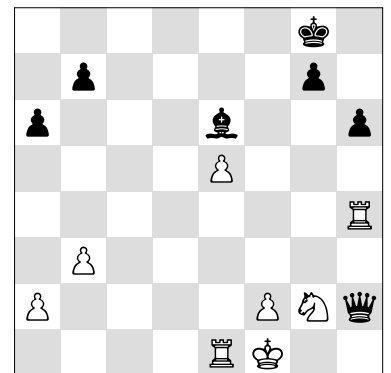
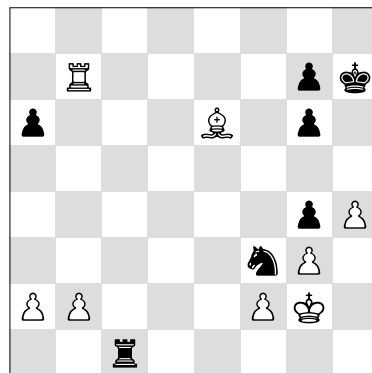
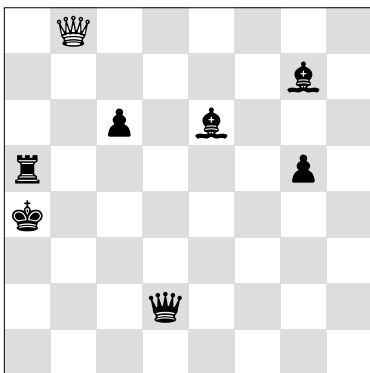
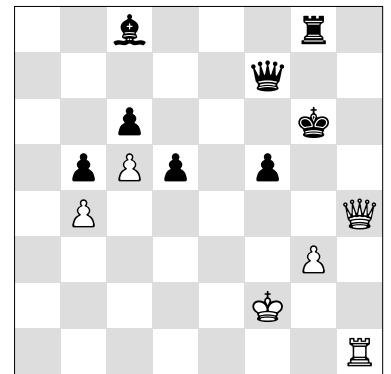
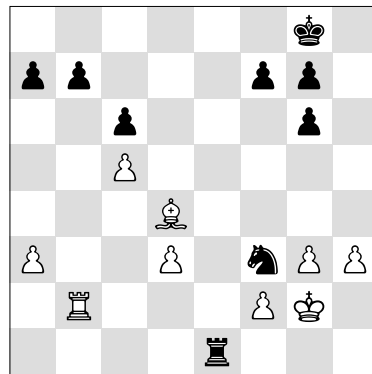
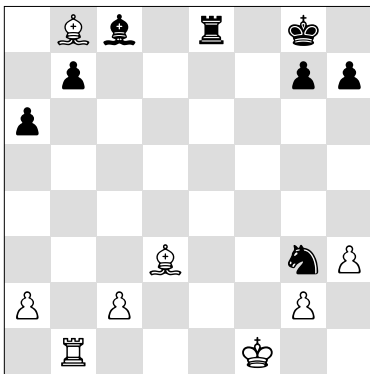
The last four pages are a bit more difficult and that is why the theme is indicated.

More about Step 1 mix: <http://www.stappenmethode.nl/en/step1.php>

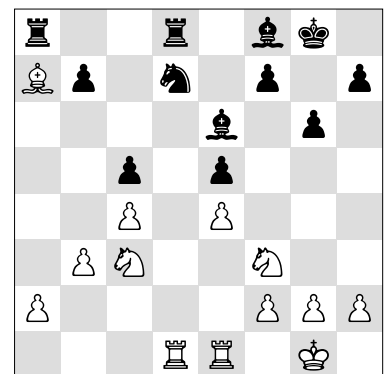
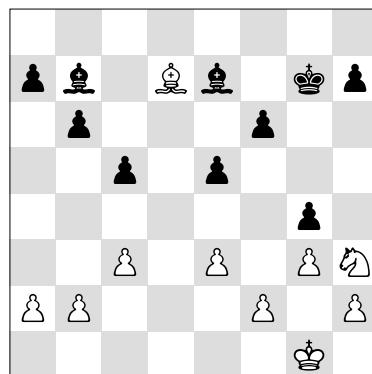
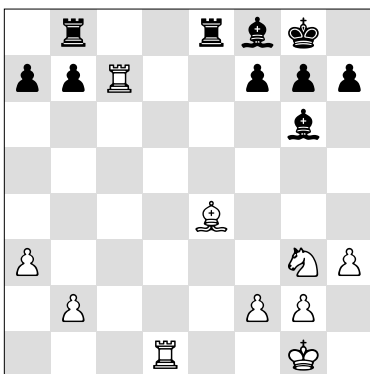
For information and ordering we refer to the website: <http://www.stappenmethode.nl/en>

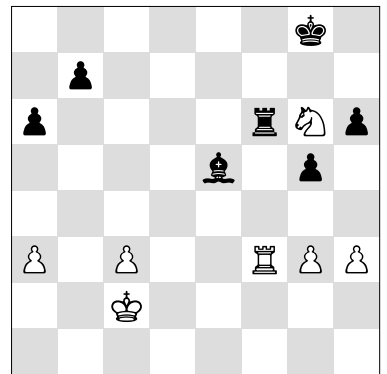
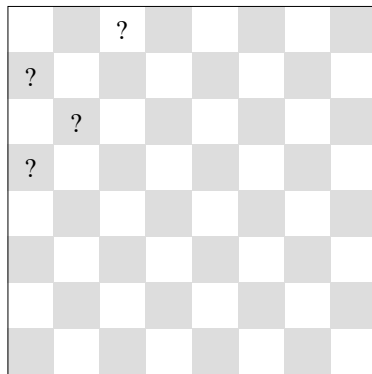
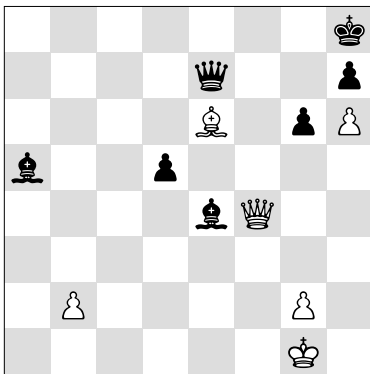
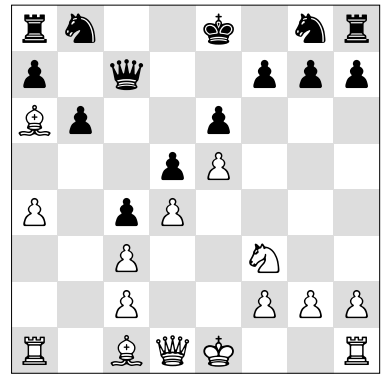
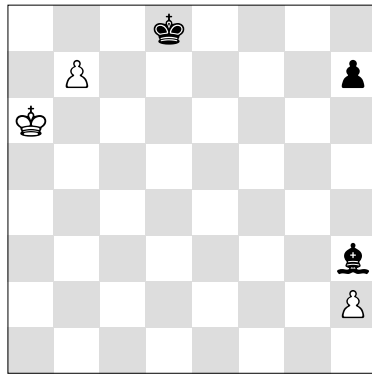
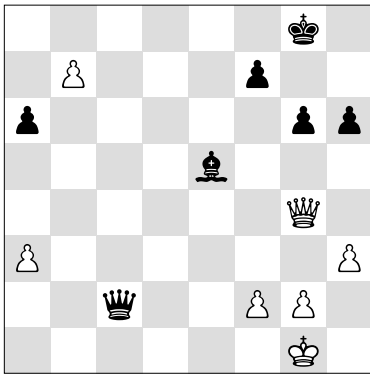


♔ = \_\_\_\_\_ ♔ = \_\_\_\_\_  
 ♕ = \_\_\_\_\_ ♕ = \_\_\_\_\_

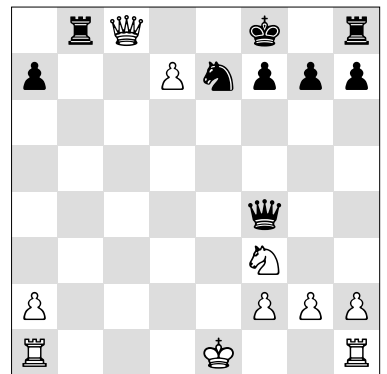
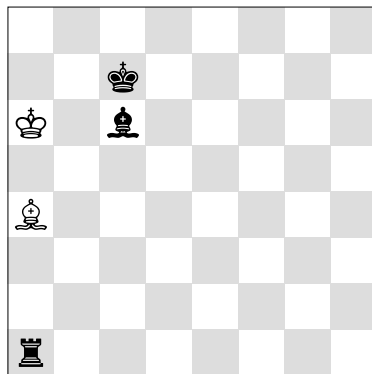
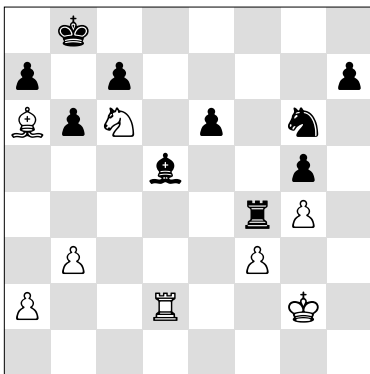
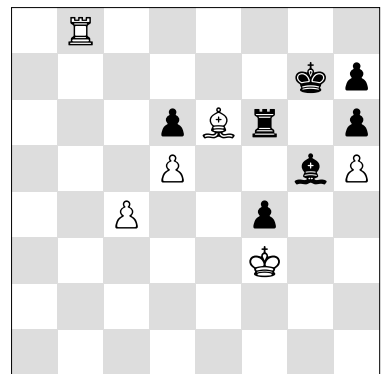
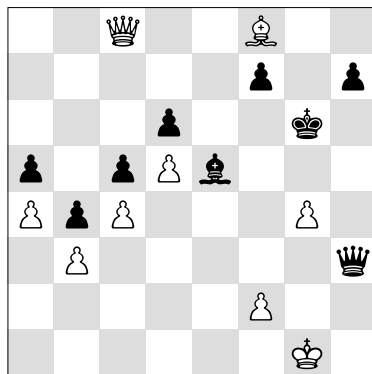
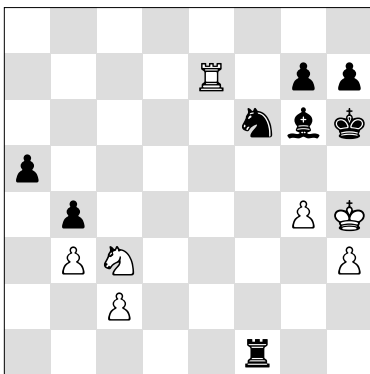


♔b8 - \_\_\_\_\_ - \_\_\_\_\_ +

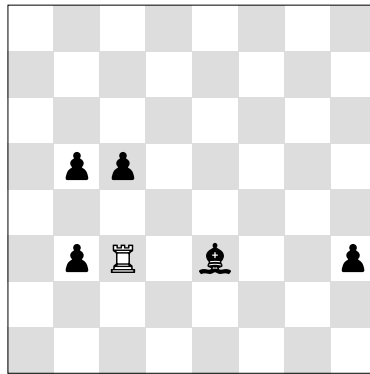
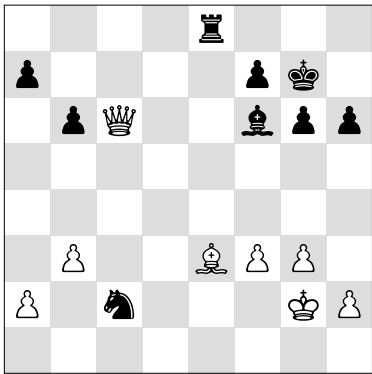




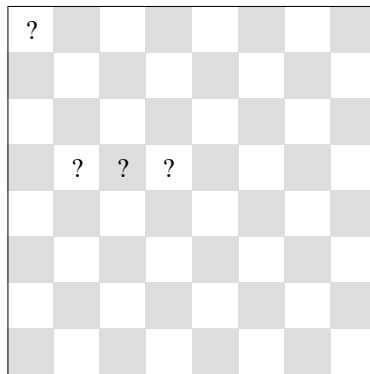
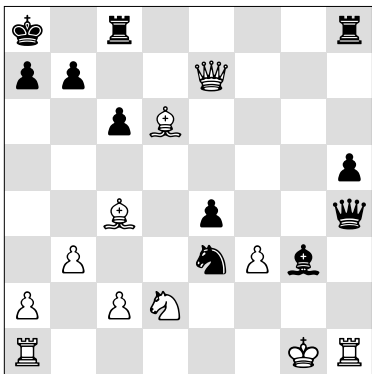
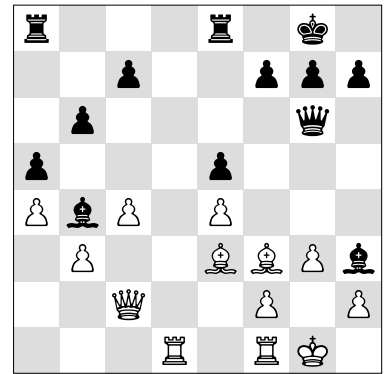
♔ = \_\_\_\_ ♑ = \_\_\_\_ ♖ = \_\_\_\_  
 ♚ = \_\_\_\_



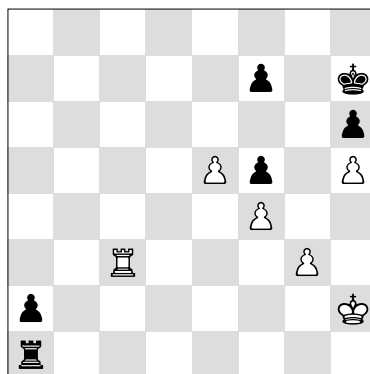
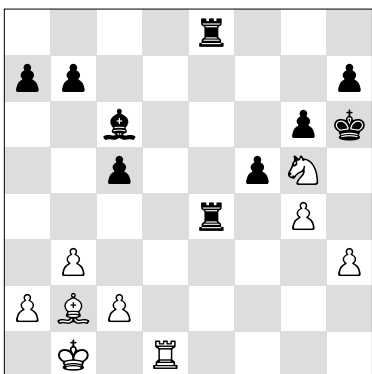
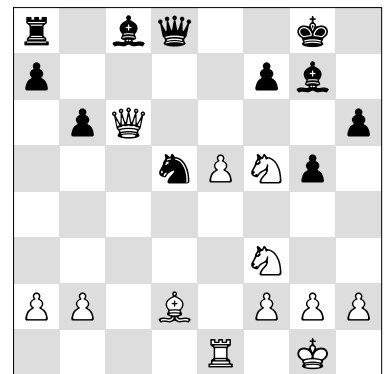
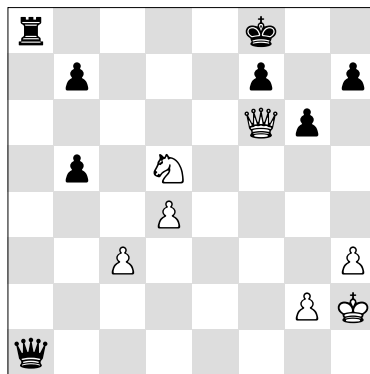
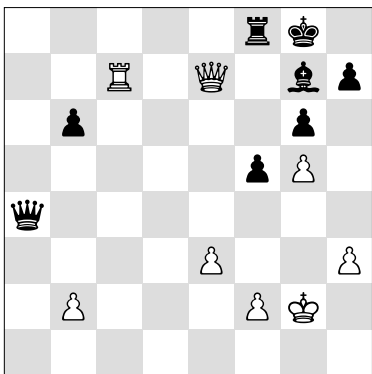
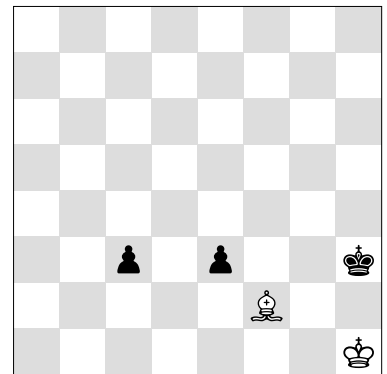
1. ♔a7 \_\_\_\_ # 1. ♔a5 \_\_\_\_ #



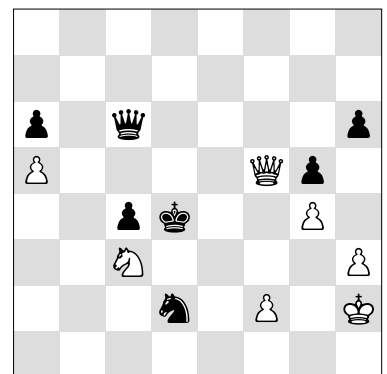
♖c3x    x    x    x    x

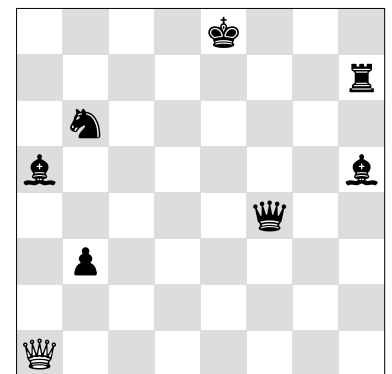
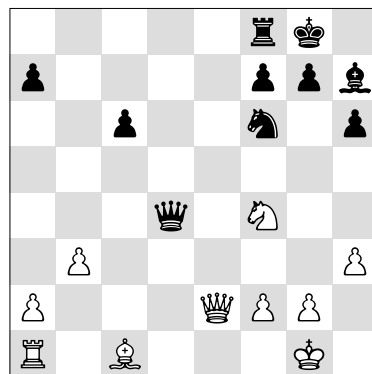
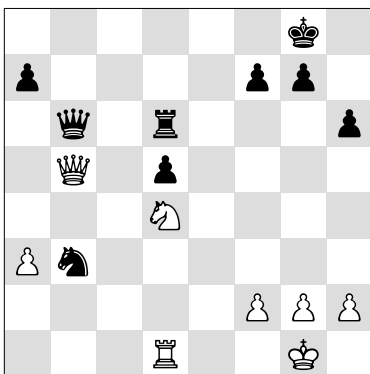
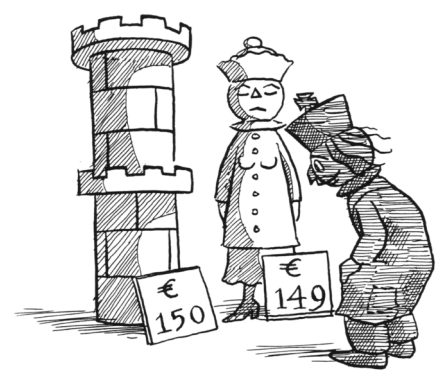
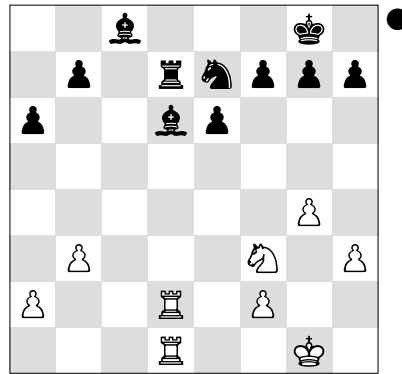
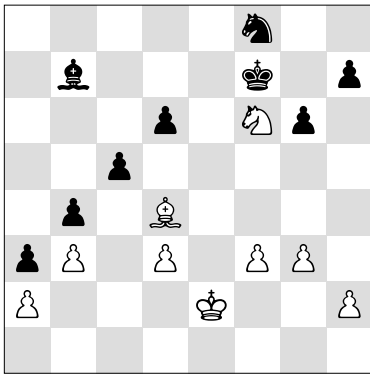


♖=    ♘=    ♙=    ♚=

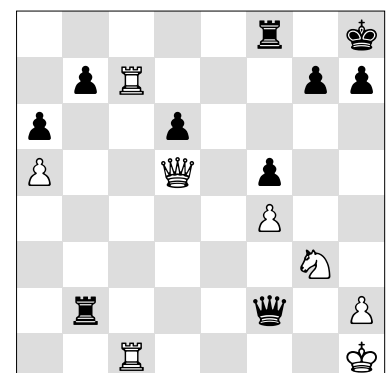
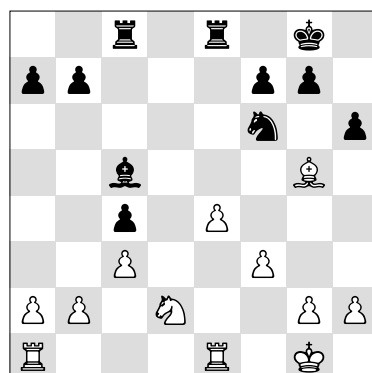
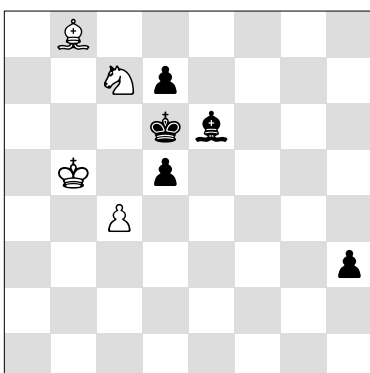
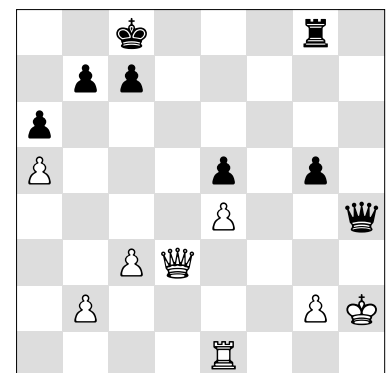
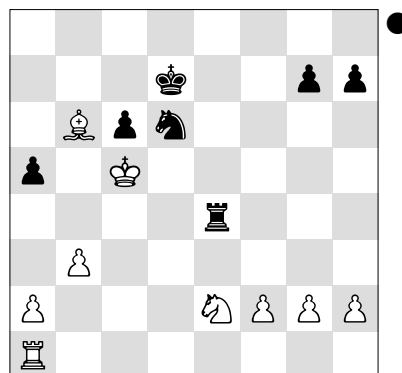
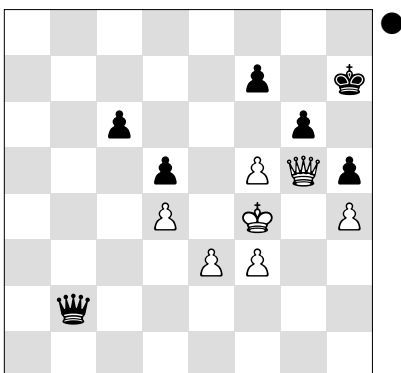


○ ♖c2    ○ ♖a3





♔a1 – \_\_\_\_ – \_\_\_\_ +



○ ♖h1   ○ ♖f1   ○ ♗e3